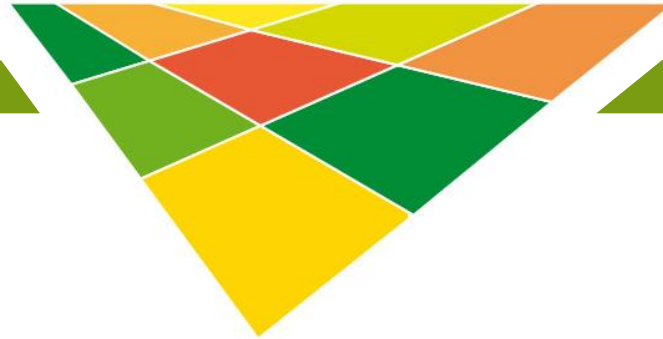


100ee erneuerbare
energie region



**100%-Renewable-Energy-Regions
- The Bottom Up Initiative from German Regions -**

M. Sc. Katharina Schenk

Research Associate, IdE

El Hierro, 2014/06/25

- 1. Project frame**
- 2. Project procedure**
- 3. Examples: Front runners of the network**
- 4. Benefits for the regions**
- 5. International projects and campaigns**

- Supports regions, communities and cities aiming to cover their energy demand with renewable energy since 2007
 - Overview of regional activities using the 100ee-Map
 - Know-how transfer, consulting, lectures and information materials
 - Supporting regions via public relations activities
- Is conducted by the IdE (Institute decentralized Energy Technologies) located in Kassel
- Financed by the Federal Ministry for the Environment, Nature Conservation and Nuclear Safety and technically advised by the Federal Environment Agency till Dezember 2013
- Now continued as a self-supporting network

From R&D- Project to “100ee-Regions-Network”

2007-2010

R&D Project

Overview 100% Renewable Energy Regions, Case Studies, Accompanying Research, Knowledge Transfer between Regions, Conference, Website

2010-2013

Network Development “100ee-Regions” in Germany

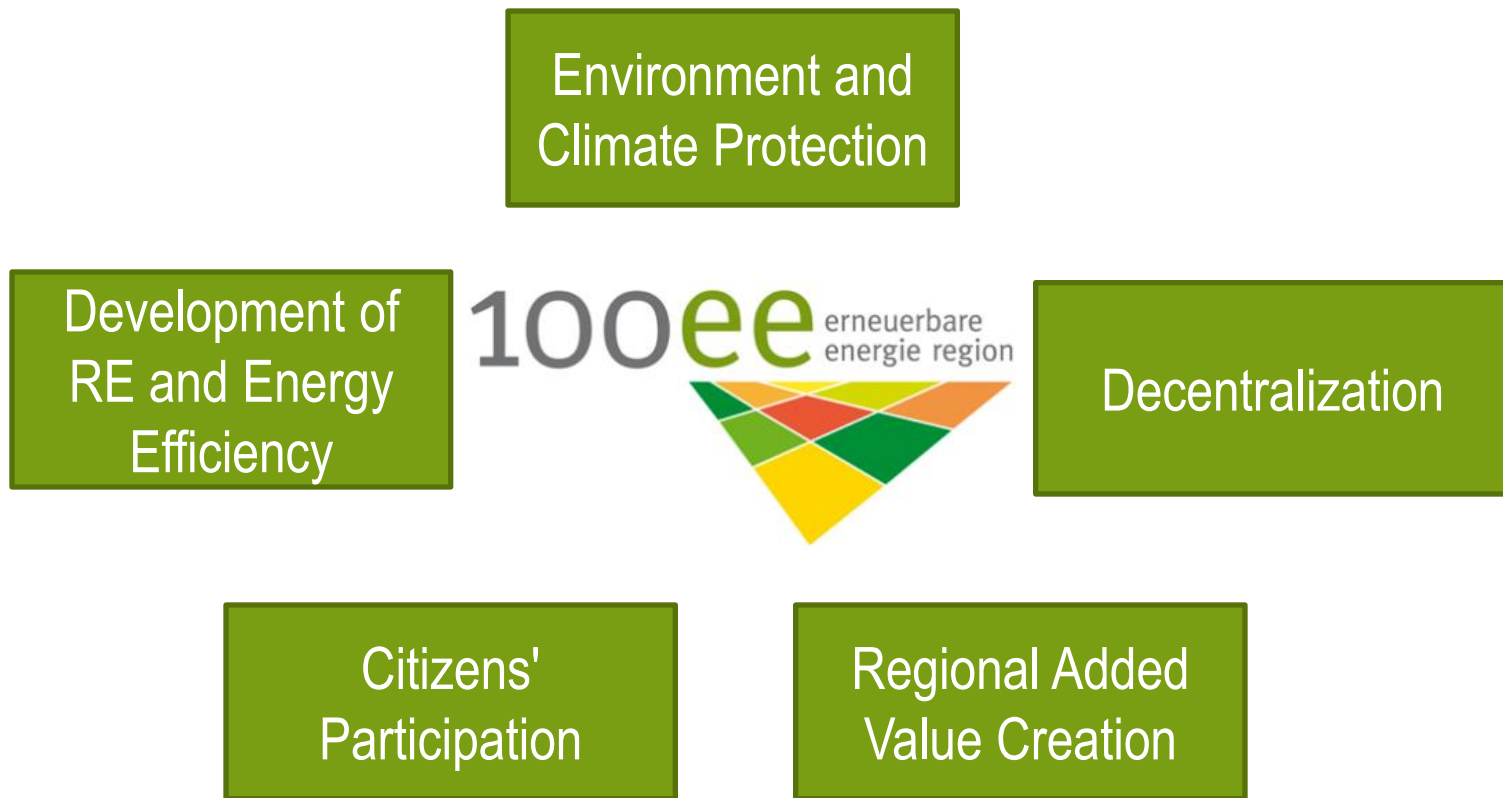
Supporting the “100ee-Regions” by Expert Advice, Lectures, Workshops and Development of Management Structures for efficient Networking

since
2014

Further Development of Network Activities

Cross-sector cooperation (Local Administration, Associations , Industry..)
Marketing Campaigns, Expert Advice, Benchmarking, Conference

Goals of Municipalities and Districts in Energy Turnaround



Basic concept: sustainable energy supply and regional development



- Energy conservation, energy efficiency and renewable energy are equal goals
- The potentials of all renewable energy sources are developed in a sustainable way: economical, environmentally safe and socially acceptable
- The three sectors electricity, heat and mobility are considered likewise



Three categories of regions

100ee erneuerbare
energie region



100ee erneuerbare
energie region



- pioneers for the regional energy turnaround

100ee urban

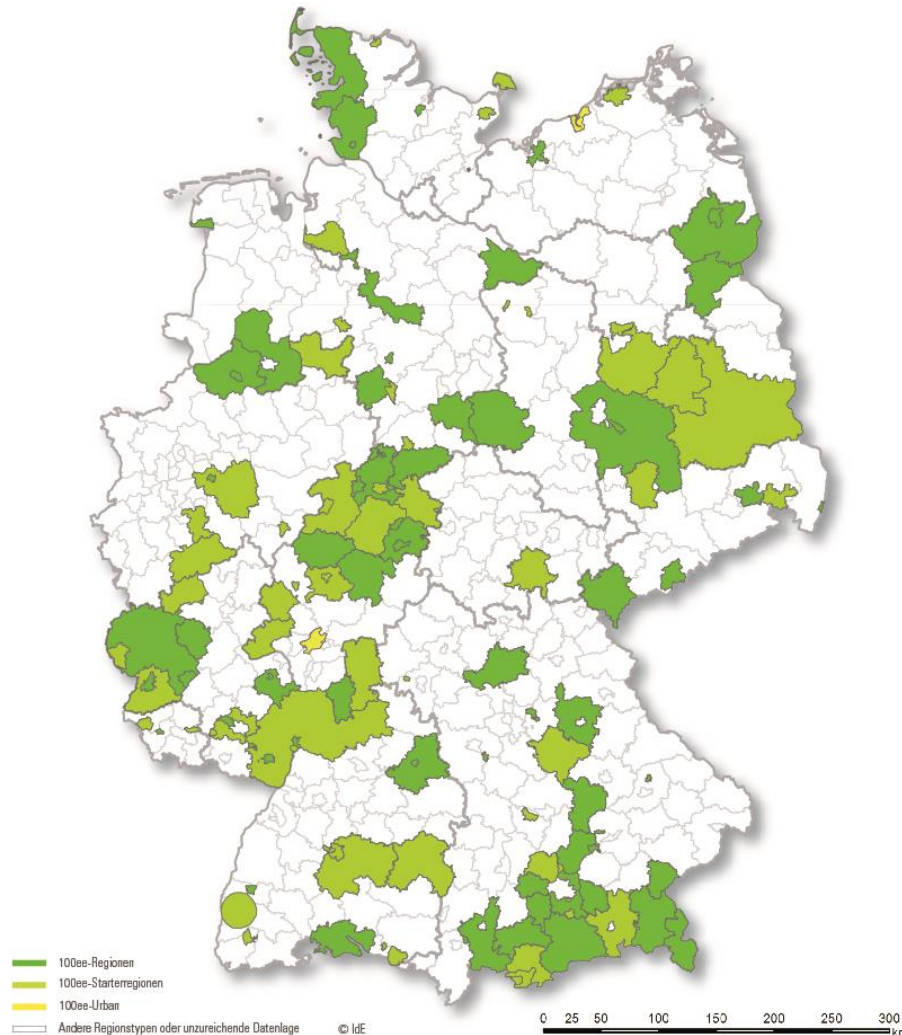


- pioneers in urban regions

100ee starter
region



- preliminary step towards a 100ee-region



Number of Regions:

- 100ee-Regions: 79
- 100ee-Starter Regions: 58
- 100ee urban: 3

Total: 140 Regions

Area: 105.000 km² (30%)

Citizens: 21,2 Mio. (26%)

First step: presentation of the region

- hand in questionnaire and information material
- telephone interview with project staff

Second step: the decision of the project team

- classification into a category based upon a rating system

Third step: registration of the region

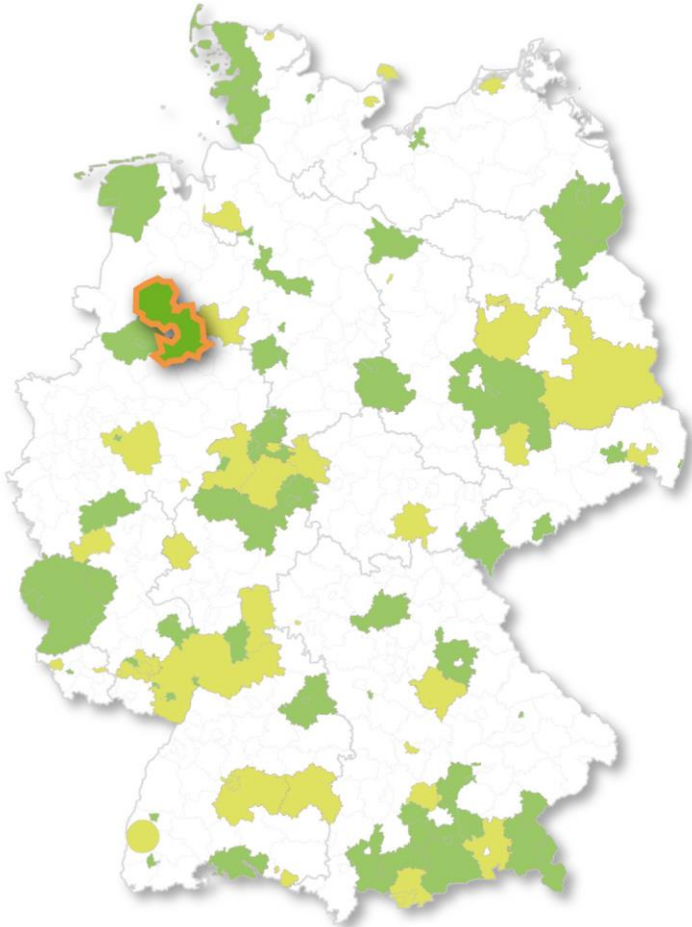
- admission on the 100ee-Map
- awarding with certification on the annual 100ee congress





Criteria on 5 Levels	total 33
Defining Criteria	2
Target Level	6
Operational Level	15
Status Level	7
Local Particularities	3

- All Criteria are equally weighted (0-3 Points per Criterion)
- Pioneer Regions have already reached a maximum of 80 points, Starter-Regions of 39 Points



- District and city in Lower Saxony
- Inhabitants: 360.000 (district) and 160.000 (city)
- Area: 2.121 km² (district) and 120 km² (city)
- 100% Climate Protection Masterplan
 - Target by 2050: Reducing 95% of CO₂ Emissions
 - 100% RE (electricity, heat , mobility)
 - - 50% energy demand
- RES Percentage in 2013:
 - Electricity: 30% (district), 4% (city)
 - Heat: 11% (district), 2% (city)


Benefits through cooperation between city and surrounding area

Cities

- Cities cannot fully meet their energy supply with RES within their own limited areas
- Main focus: energy saving and efficiency, climate friendly mobility, PV roof units
- can provide know-how and have sufficient capital for investments

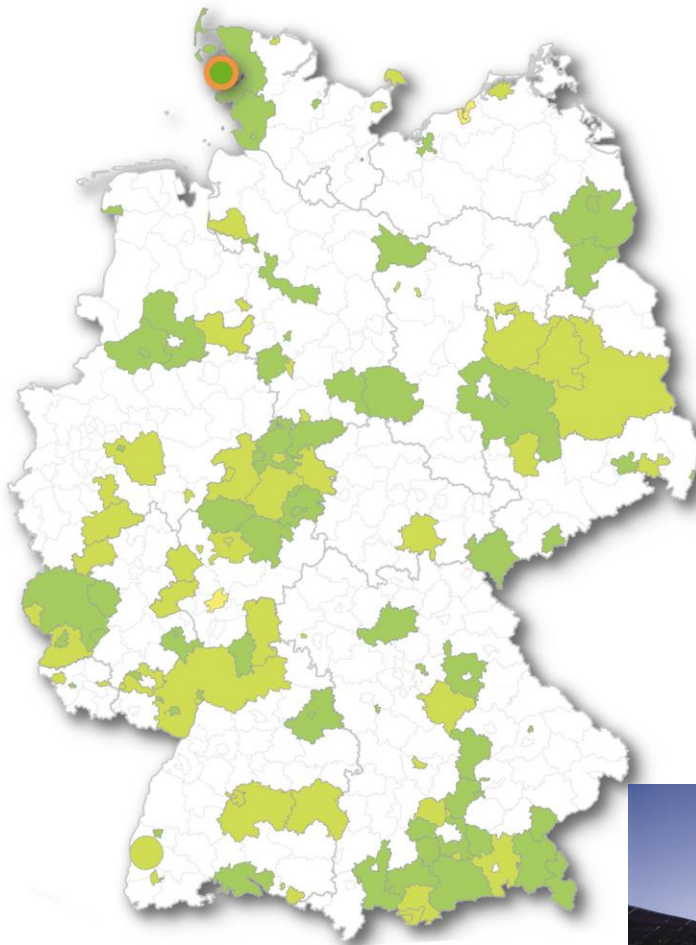
Districts

- Often have large areas with potential for RE produktion
- Priority: develop renewable energy
 - investments with participation from cities are possible

 **Cities and districts can mutually complement each other**



Pellworm – North Frisian pioneer in the field of renewable energy and climate protection



- North Frisian island in federal state of Schleswig-Holstein
- Inhabitants: 1.150
- Area: 37 km²
- RES Percentage in 2013:
 - Electricity: 275%



Pellworm – renewable energy pioneer for more than 30 years

100eee erneuerbare energie region



Future: CO₂ neutral & self sufficient

RES round table

2002: First public biogas unit



Public wind-park company was founded



2000: decentralized project for EXPO



Today: testing smart grids and storage technologies

1983: 300 kW solar power station & three 25 kW wind-energy units



Middle of the 1990s: energy concept to become self-sufficient



Municipality opened energy office

End of 1970s: testing first small wind energy systems



100ee-Regions-Network: Our services

Expert Advice

- Workshop-Moderation
- Lectures
- Consulting
- Advisory Boards



Know-how Transfer

- Working Papers
- Best Practice
- Workshops



Marketing and Public Relations

- Awarding the “100ee-Region” Label
- 100ee-Regions-Map
- Website / Newsletter / Social Media
- Poster Session at National Conference



Networking

- Annual National Conference
- Matchmaking of Experts
- Co-organizer of Regional Exhibitions and Conferences



Get connected – 100ee-regions congress



11.-12. November 2014 in Kassel
www.100-ee-kongress.de

A promotional poster for the congress. At the top left, the word 'KONGRESS' is written in white on an orange background. Below it, '100%' is written in large green font, followed by 'Erneuerbare Energie Regionen' in smaller green font. To the right is a graphic of a stylized landscape with a wind turbine, houses, and a path. At the top right, the dates '11. + 12. NOVEMBER 2014' and the location 'KONGRESS PALAIS KASSEL' are listed. At the bottom right, a white banner with orange text says 'Jetzt Termin vormerken! 11. + 12. November 2014'. At the bottom left, the word 'VERANSTALTER' is written in white on an orange background.



EU Project – 100% RES Communities



- **Funding:** EU-Commission programme Intelligent Energy Europe (IEE)
- **Project team:** 12 partners, 10 EU-countries
- **Goal:** Connecting 100% RES communities all over Europe; Twinning actions, capacity building
- **Core elements:** Covenant of Mayors and SEAPS, RES Champions' League, definition of 100ee-regions on European level
- <http://www.100-res-communities.eu/>



Go 100% Renewable Energy



This international campaign builds on initiatives that already take place on national, regional and local level and gives this initiatives a common identity on a global level

Goals:

- Expand the coalition of the willing
- Strengthen platforms for exchanging knowledge
- Inform and win over key decision-makers
- Inspire and involve the people

-> Establish a global network of 100% RE regions and cities



HOME ABOUT US 100% RENEWABLE ENERGY MAP EXPERTS E-LIBRARY GET INVOLVED PRESS



www.go100re.net

Founding Partner Organizations



Thank you for listening



Further information:

www.100-ee.de

www.ide-kassel.de

Contact

IdE gGmbH

Katharina Schenk

Ständeplatz 15

34117 Kassel, Germany

Tel: +49 (0)561/788096264

E-Mail: k.schenk@ide-kassel.de